



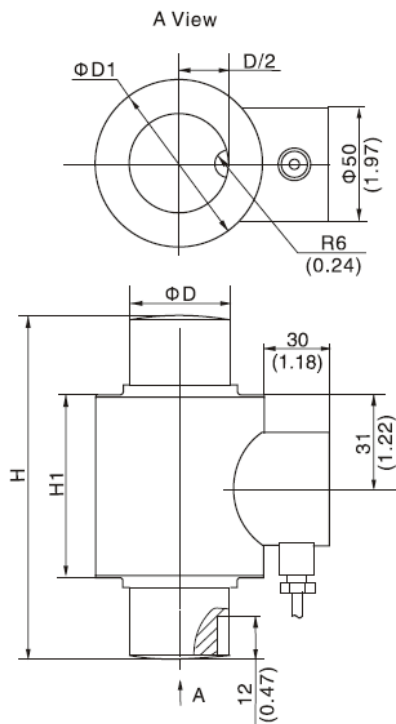
- Stainless steel IP 68 compression load cell
- Hermetically sealed
- Suitable for vehicle and hopper scales and vehicle testing facilities
- Built in surge arrestors

Capacity	Accuracy	Part-Number
10 t	C3	BM14K-C3-10t-12B6-W1
15 t	C3	BM14K-C3-15t-12B6-W1
20 t	C3	BM14K-C3-20t-12B6-W1
30 t	C3	BM14K-C3-30t-18B6-W1
40 t	C3	BM14K-C3-40t-20B6-W1
50 t	C3	BM14K-C3-50t-20B6-W1
60 t	C3	BM14K-C3-60t-20B6-W1
100 t	C3	BM14K-C3-100t-20B6-W1

Specification:

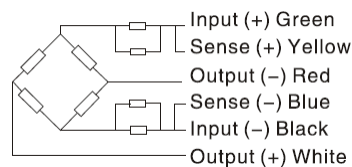
Accuracy class		OIML R60 C3		
Output sensitivity (= FS)	mV/V	2.0 ± 0.002		
Maximum capacity (E _{max})	t	10, 15, 20, 30, 40, 50	60, 100	
Maximum number of load cell intervals (n _{LC})		3000		
Ratio of minimum LC verification interval Y = E _{max} / V _{min}	Y	7000	9000	
Combined Error	%FS	≤ ± 0.020		
Minimum dead load	t	0		
Safe overload	of E _{max}	150 %		
Ultimate overload	of E _{max}	300 %		
Zero balance	of FS	≤ ± 1.0 %		
Excitation, recommended voltage	V	5 ~ 12		
Excitation maximum	V	18		
Terminal resistance, input	Ω	700 ± 7		
Terminal resistance, output	Ω	703 ± 4		
Insulation impedance	MΩ	≥ 5000 (at 50VDC)		
Temperature range, compensated	°C	-10 ~ +40		
Temperature range, operating	°C	-35 ~ +65		
Element material		Stainless steel		
Ingress Protection (according to EN 60529)		IP68		
ATEX classification (optional)		II1G Ex ia II1C T4	II1D Ex ia D 20 T73°C	II3G nL IIC T4

Outline Dimensions in mm (Inch)



Dimension Capacity	H	H1	ΦD	ΦD1
10t,15t	130 (5.12)	80 (3.46)	44 (1.73)	74 (2.91)
20t ~ 40t	150 (5.91)	92 (3.62)	44 (1.73)	74 (2.91)
50t,60t	210 (8.27)	92 (3.62)	44 (1.73)	74 (2.91)
100t	260 (10.24)	121 (4.76)	64 (2.52)	93 (3.66)

Wiring:



- Shielded, 6 conductor cable, Ø 5,0 mm.
- Different cable type and cable length are available on customer request.
- Shield is not connected to element.