






| Capacity | Accuracy | Part-Number |
|----------|----------|-----------------|
| 50 kg | C3 | B3G-C3-50kg-6B |
| 100 kg | C3 | B3G-C3-100kg-6B |
| 250 kg | C3 | B3G-C3-250kg-6B |
| 500 kg | C3 | B3G-C3-500kg-6B |
| 1.0 t | C3 | B3G-C3-1.0t-6B |
| 2.5 t | C3 | B3G-C3-2.5t-6B |
| 5.0 t | C3 | B3G-C3-5.0t-6B |
| 7.5 t | C3 | B3G-C3-7.5t-6B |
| 10 t | C3 | B3G-C3-10.0t-6B |

RoHS

Ex NEPSA



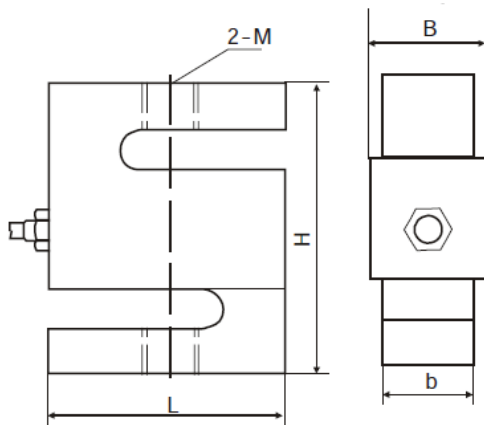
- Stainless steel IP67 "S" type load cell
- Tension and compression applications
- Suitable for hanging, hopper and other weighing devices
- Also available in imperial capacities and dimensions

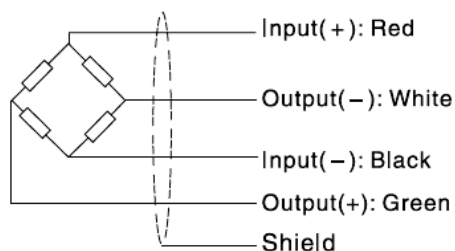
Specification:

| Accuracy class | OIML R60 C3 | | |
|---|---------------------|--------------------|----------------------|
| Output sensitivity (= FS) | mV/V | 3.0 ± 0.008 | |
| Maximum capacity (E _{max}) | t | 0.05/0.1 | 0.25/0.5/1/2.5 |
| Maximum number of load cell intervals (n _{LC}) | | 3000 | |
| Ratio of minimum LC verification interval Y = E _{max} / v _{min} | | 7000 | 10000 |
| Combined Error | %FS | ± 0.0200 | |
| Minimum dead load | kg | 0 | |
| Safe overload | of E _{max} | 150 % | |
| Ultimate overload | of E _{max} | 300 % | |
| Zero balance | of FS | ± 1.0 % | |
| Excitation, recommended voltage | V | 5 ~ 12 | |
| Excitation maximum | V | 18 | |
| Terminal resistance, input | Ω | 430 ± 50 | |
| Terminal resistance, output | Ω | 351 ± 2 | |
| Insulation impedance | MΩ | ≥ 5000 (at 50VDC) | |
| Temperature range, compensated | °C | -10 ~ +40 | |
| Temperature range, operating | °C | -35 ~ +65 | |
| Element material | | Stainless steel | |
| Ingress Protection (according to EN 60529) | | IP67 | |
| ATEX classification (optional) | | II1G Ex ia II1C T4 | II1D Ex iaD 20 T73°C |

Outline Dimensions in mm



| Capacity | L | H | b | B | M |
|------------------------------|------------------|-----------------|-----------------|-----------------|------------------------|
| 0.05t, 0.1t (0.05-0.3klb) | 50.8 (2.00) | 60.96 (2.40) | 11.68 (0.46) | 15.06 (0.59) | M8 (1/4-28UNF) |
| 0.25t, 0.5t (0.5-1.5klb) | 50.8 (2.00) | 60.96 (2.40) | 18.03 (0.71) | 21.41 (0.84) | M12 (1/2-20UNF) |
| 1t (2.2.5klb) | 50.8 (2.00) | 60.96 (2.40) | 24.38 (0.96) | 27.76 (1.09) | M12 (1/2-20UNF) |
| 2.5t (3klb) | 76.2 (3.00) | 99.06 (3.90) | 24.38 (0.96) | 27.76 (1.09) | M20×1.5 (1/2-20UNF) |
| 5klb | 76.2 (3.00) | 99.06 (3.90) | 24.38 (0.96) | 27.76 (1.09) | 3/4-16UNF |
| 5t (10klb) | 74.68 (2.94) | 99.06 (3.90) | 30.74 (1.21) | 34.12 (1.34) | M20×1.5 (3/4-16UNF) |
| 7.5t (15klb) | 87.38 (3.44) | 139.7 (5.50) | 37.08 (1.46) | 40.46 (1.59) | M24×2 (1-14UNF) |
| 10t (20klb) | 112.78 (4.44) | 177.8 (7.00) | 42.93 (1.69) | 46.31 (1.82) | M30×2 (5/4-12UNF) |



Wiring:

- Shielded, 4 conductor cable.
- Cable: Ø5 mm.
- Standard cable length: 6m.
- Cable type and cable length for customer's own application are available on request.
- Shield not connected to element.