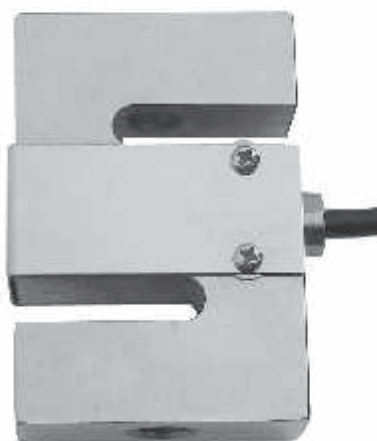




DEE/DEF-A/-SS/-ASS Loadcell

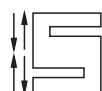
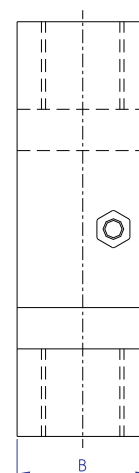
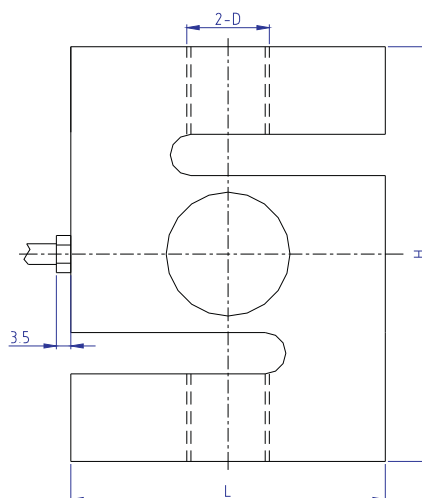
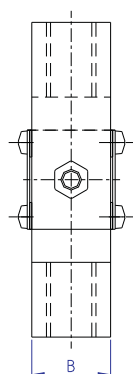
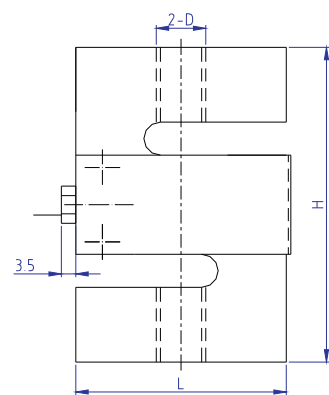
DEE/DEF-A/-SS/-ASS



Rated Load(kg)	D	L	H	B
100~750	M12	51	76.2	19.1
1000	M12	51	76.2	25.4
1200~5000	M20x1.5	76.2	100.4	31.8

100~1000kg

1.2~5t



Crane scale, belt scale, blending system

TECHNICAL PARAMETER

OAP version 4Wires:Exc+(Blue);Exc-(Black);Sig+(White);Sig-(Red)

Rated capacities(Emax)	100,150,200,250,300,500,750kg;1,1.2,1.5,2,3,5t	Temperature range, compensated	-10℃~+40℃
Sensitivity	2.0±0.003mV/V(DEE);3.0±0.003mV/V(DEF)	Temperature range, operating	-30~+70℃
Accuracy class	C2~C5	Maximum safe overload	120%F.S
		Ultimate overload	150%F.S
Zero balance	±1%F.S	Excitation,recommended	10~12V DC
TC ZERO	±0.02%F.S/10℃	Excitation,maximum	15V DC
TC SPAN	±0.02%F.S/10℃	Protection class	IP65(100~1000kg);IP68(1200~5000kg)
Input resistance	400±20Ω	Construction	Alloy Steel, Stainless Steel
Output resistance	352±3Ω	Cable	Length:5m
Insulation resistance	≥5000MΩ		Diameter: φ 5mm